

MUCKNELL ABBEY

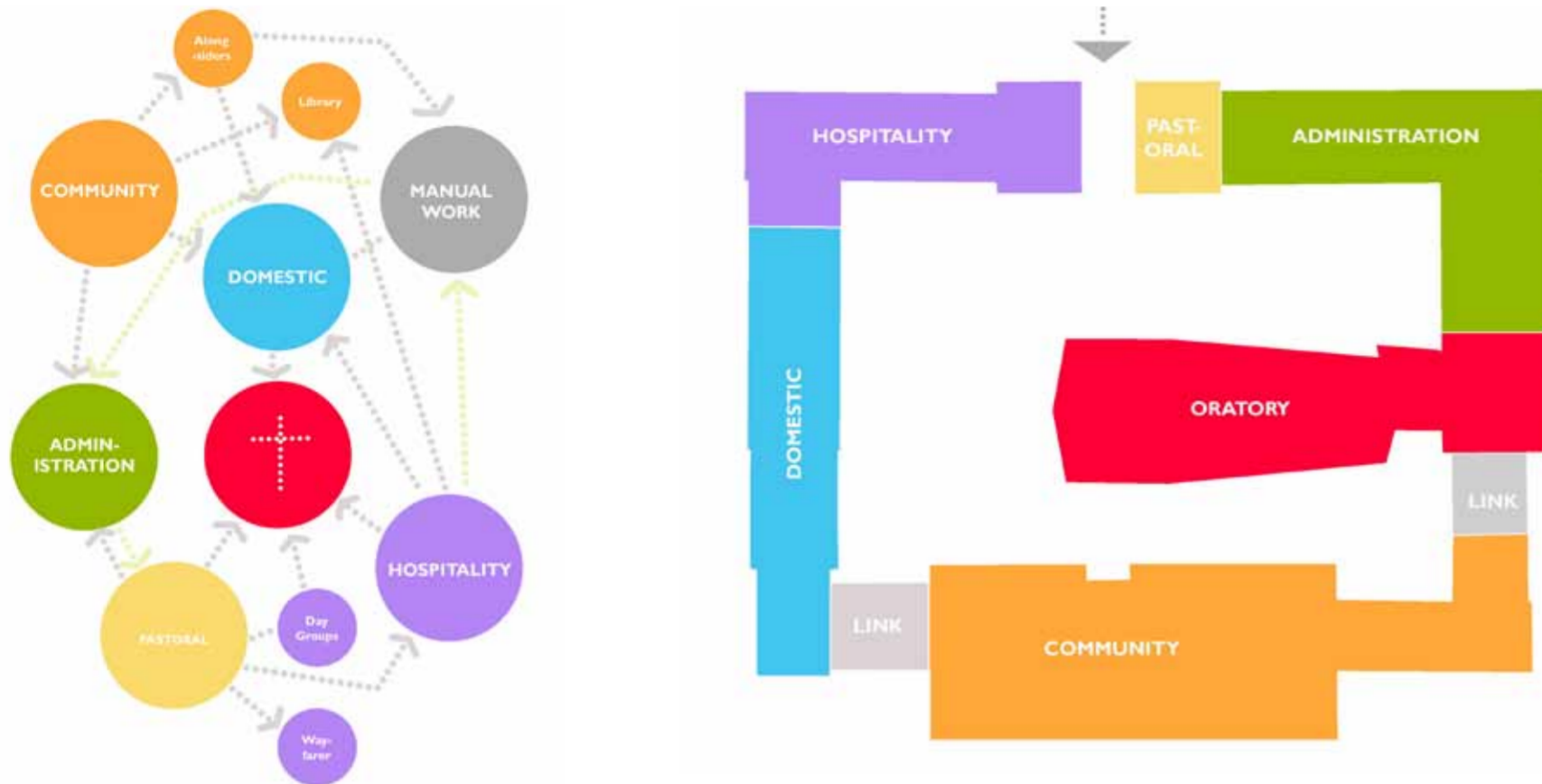
BENEDICTINE ORDER- CHURCH OF ENGLAND

DIOCESE OF WORCESTER

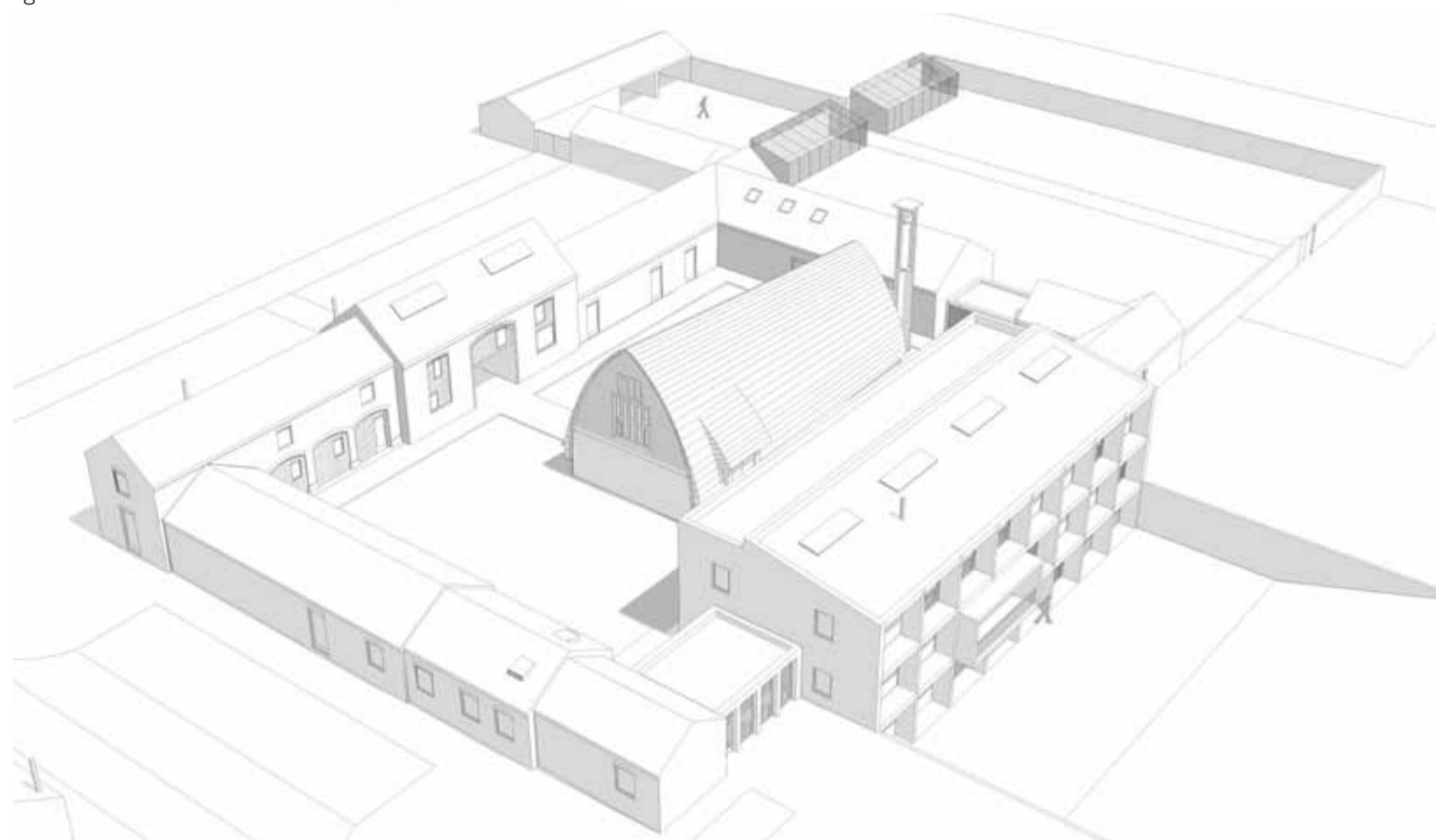
ACANTHUS CLEWS ARCHITECTS



Aerial view of Mucknell Farm, 2008 Before



Diagrams



Aerial view of Mucknell Abbey

Mucknell Abbey - A Sustainable New Monastery

Superior: Abbot Stuart Burns OSB
 Community: Society of the Salutation of St Mary the Virgin Ltd
 Dedication: Benedictine Order part of Church of England
 Bishop-Visitor: Rr Revd John Inge, Bishop of Worcester
 Address: Mucknell Abbey, Mucknell Farm Lane, Stoulton, Worcestershire WR7 4RB

Architects: Acanthus Clews Architects
 Appointment: March 2008
 Start on Site: September 2009
 Completion: November 2010
 Cost of Project: £3.6million
 Grants: Low Carbon Building Programme Funding
 English Woodland Grant Scheme

The Anglican Benedictine order of monks and nuns, formerly of Buford Priory, purchased Mucknell Farm in August 2008 after an extensive search for new sites for a sustainable monastic home. The site consisted of a heavily modified 18th Century farmhouse with 19th Century brick outbuildings in a regular courtyard arrangement located on a knoll surrounded by 16 hectares of agricultural land.

Acanthus Clews Architects' design for a sustainable new monastic home provided a cohesive vision for Mucknell Farm, responding positively to the Community's specific needs. The farmhouse was replaced with a new Community Building providing initially 14 number monastic cells and space for a further 4 cells, along with studios and community facilities. All the historic outbuildings were converted to provide a domestic, guest and office accommodation including a refectory and a library and within the heart of the complex a new Oratory as a dedicated place of worship.

The distinctive curved sculptural form of the Oratory evolved to provide an acoustically responsive space to amplify and enhance sound, with north facing windows to reduce solar gain and provide consistent light levels within the place of worship. The form, position and use of natural materials including structural timbers, cedar shingles and lime render the Oratory contrasts the existing new brick structures that form the courtyard, reinforcing the principal role of the Oratory at the heart of monastic life.



Installation of the bell tower: during the works
 Below: external view of the Oratory within the courtyard



View of Mucknell Farm during construction



Acanthus
 Clews
 architects

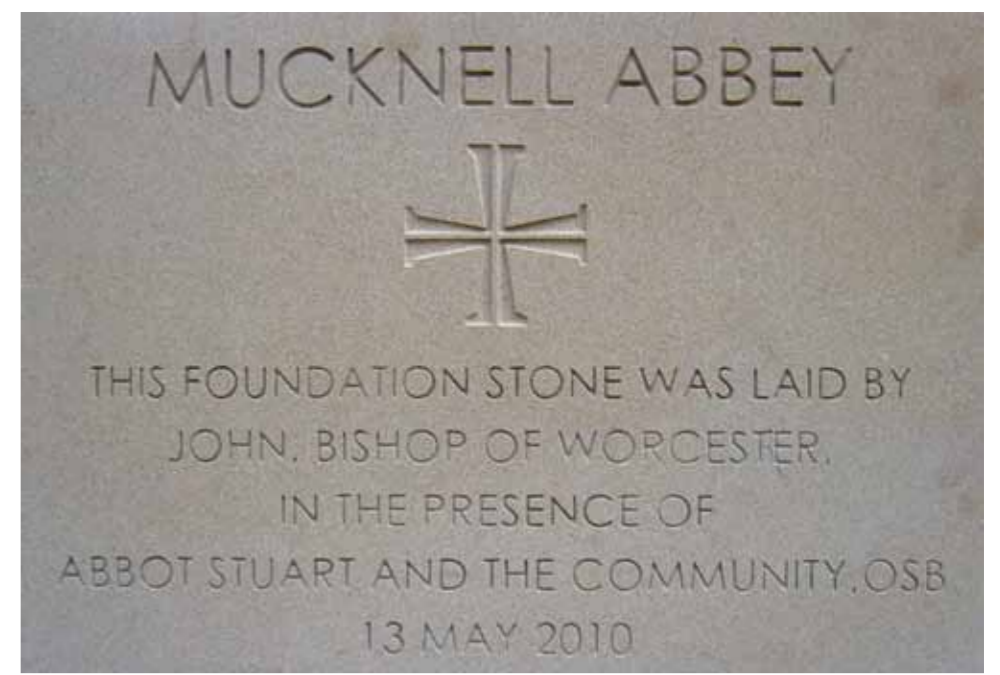
Tel: 01295 702600
 Fax: 01295 702601
 architects@acanthusclews.co.uk
 www.acanthusclews.co.uk

MUCKNELL ABBEY

BENEDICTINE ORDER- CHURCH OF ENGLAND

DIOCESE OF WORCESTER

ACANTHUS CLEWS ARCHITECTS



Consecration stone

Sustainable Design Solutions

The buildings were designed to support the community's goal to live simply and sustainably, considering a wider ecological balance and the health of the whole environment. In practical terms, the design supports energy and water consumption in the buildings, food, biodiversity and transport through the following:

- Re-use of redundant buildings where feasible, providing sustainable new uses for the existing structures
- Environmentally responsive highly-insulated new building solutions, incorporating local, natural and recycled building materials
- Biomass boiler to provide heat output
- Solar water heating for the hot water to guest and community accommodation
- Photovoltaics to generate electrical power
- Rainwater harvesting for WC's, fire and irrigation
- Biodigester and swales to treat sewage on site
- Kitchen garden and orchard to support self-sufficiency
- Estate management, planting of 5,485 trees as long-term fuel source, carbon sequestration, habitats and life-enhancing space

Factsheets giving detailed information about the renewable technologies and the estate management are available on the community website at www.mucknellabbey.org.uk.

On the 25 March 2011, Archbishop Rowan Williams presided at the Eucharist for The Annunciation, to dedicate the Oratory to the Blessed Virgin and St Benedict, and to bless the Abbey as a place of welcome and hospitality. Dr Williams said: "It is a great privilege to be part of the beginning of this new phase in the life of a long-established and much-valued Benedictine community, and it is specially good to know that - in a way typical of the best of monastic life - the building has been designed with environmental concerns very much in mind. The life of contemplation and labour that is at the heart of all Benedictine communities requires a loving care for the world around, and this community shows what that means in our contemporary setting."



Interior view of the Oratory



Exterior view of the main entrance



Exterior view of the courtyard with Oratory at heart
Below: south elevation of the new Community Building



View of Oratory, bell tower and link from kitchen garden



Dedication of the Oratory to Our Lady and St Benedict
by Archbishop Rowan Williams



Acanthus
Clews
architects

Tel: 01295 702600
Fax: 01295 702601
architects@acanthusclews.co.uk
www.acanthusclews.co.uk